

B&C FLEECE



**OUTER
WEAR
/UNIT**



B&C COOLSTAR /MEN - FM 717

ENGINEERED FLEECE



OUTER WEAR /UNIT



- Lightweight ergonomic full zip micro-fleece
- Maximum insulation for a minimum weight and compact design
- Double-side brushed for softness and featuring a supersoft, thermally efficient fleece
- Its light weight provides high flexibility to wear it as a jacket or as extra insulation layer, for outdoor or indoor
- Full front reverse zip fastener with zip pull
- Chin protector
- 2 front pockets with reverse zip fastening and zip pull
- Set-in sleeves
- Open hem and open cuffs
- Ergonomic arm and elbow sleeve shape for freedom of movement and comfort

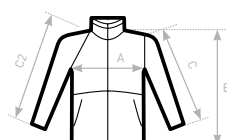


- 100% anti-pilling polyester micro-fleece (144 filaments)
- 170 g/m²
- S - M - L - XL - 2XL - 3XL
- 5 pcs/pack & 15 pcs/carton



DUO♂
CONCEPT

with B&C Coolstar /women



C2= RAGLAN

SIZES [CM]

B&C COOLSTAR /MEN FM 717

A HALF CHEST
B BODY LENGTH
C SLEEVE LENGTH

	XS	S	M	L	XL	2XL	3XL
A	-	55	58	61	65	69	73
B	-	67	70	70	72,5	72,5	75
C	-	64	65	66	67,5	69,5	71



B&C COOLSTAR /WOMEN - FW 752

B&C
COLLECTION

ENGINEERED FLEECE



B&C
COLLECTION

OUTER WEAR /UNIT

- Lightweight ergonomic full zip micro-fleece
- Maximum insulation for a minimum weight and compact design
- Double-side brushed for softness and featuring a supersoft, thermally efficient fleece
- Its light weight provides high flexibility to wear it as a jacket or as extra insulation layer, for outdoor or indoor
- Full front reverse zip fastener with zip pull
- Chin protector
- 2 front pockets with reverse zip fastening and zip pull
- Feminine cut
- Chest seams for waisted form
- Set-in sleeves
- Open hem and open cuffs
- Ergonomic arm and elbow sleeve shape for freedom of movement and comfort

DUO♂
BLACK

DUO♂
NAVY

DUO♀
STEEL GREY

100% anti-pilling polyester micro-fleece (144 filaments)

170 g/m²

XS - S - M - L - XL - 2XL

5 pcs/pack & 15 pcs/carton



DUO♂
CONCEPT

with B&C Coolstar /men



C2= RAGLAN

SIZES [CM]

B&C COOLSTAR /WOMEN FW 752

A HALF CHEST
B BODY LENGTH
C SLEEVE LENGTH

	XS	S	M	L	XL	2XL	3XL
A	43,5	46,5	49,5	52,5	56,5	60,5	-
B	62,5	63	64	66	67	69,5	-
C	61	62	63	64	65,5	67	-

2
FAIR
WEAR
FOUNDATION

FLEECE | WOMEN

B&C WINDPROTEK - FU 749

B&C
COLLECTION

ENGINEERED FLEECE

B&C
COLLECTION

OUTER WEAR /UNIT

- Windproof, waterproof and breathable bonded membrane
- High insulating protection
- Tone-on-tone full zip opening with zip pull
- Body fit and set-in sleeves
- Inside full-length windproof comfort placket (curved finish)
- 2 pockets with zips hidden in front panelling
- Elasticated cuffs
- Open hem with elasticated cord, 2 stoppers and easy-to-pull rings



100% anti-pilling polyester micro-fleece (144 filaments)
+ breathable membrane bonded

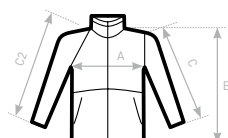
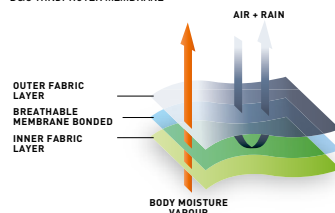
320 g/m²

XS - S - M - L - XL - 2XL - 3XL*

1 pc/pack & 10 pcs/carton

* ONLY AVAILABLE IN BLACK, NAVY AND RED

B&C WINDPROTEK MEMBRANE



C2= RAGLAN

SIZES [CM]

B&C WINDPROTEK FU 749

A HALF CHEST
B BODY LENGTH
C SLEEVE LENGTH

	XS	S	M	L	XL	2XL	3XL
A	51	54	57	60	63	66	69
B	67,5	69	70,5	72	73,5	75	76,5
C	60	61	62	63	64	65	66

2
FAIR
WEAR
FOUNDATION

FLEECE | UNISEX

B&C ICEWALKER+ - FU 703

RAW FLEECE



OUTER WEAR /UNIT

- Tone-on-tone full zip opening with zip pull
- 2 front pockets with zips
- Open hem with elasticated cord, 2 stoppers and easy-to-pull rings



BLACK *

NAVY *

RED *



CHARCOAL

* COLOURS AVAILABLE IN 3XL



100% anti-pilling polyester fleece



300 g/m²



XS - S - M - L - XL - 2XL - 3XL*



5 pcs/pack & 15 pcs/carton

* ONLY AVAILABLE IN BLACK, NAVY AND RED



C2= RAGLAN

SIZES [CM]

B&C ICEWALKER+ FU 703

A HALF CHEST
B BODY LENGTH
C SLEEVE LENGTH

XS	S	M	L	XL	2XL	3XL
50	53	56	59	62	65	68
68	69,5	71	72,5	74	75,5	77
61,5	62,5	63,5	64,5	65,5	66,5	67,5



B&C TRAVELLER+ - FU 705

RAW FLEECE



OUTER WEAR /UNIT

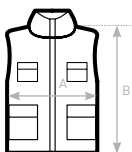
- Tone-on-tone full zip opening with zip pull
- 2 front pockets with zips
- Open hem with longer back panel
- Binding polyester fabric at collar, armholes and bottom hem in matching colour



* COLOURS AVAILABLE IN 3XL

- 100% anti-pilling polyester fleece
- 300 g/m²
- XS - S - M - L - XL - 2XL - 3XL*
- 5 pcs/pack & 15 pcs/carton

* ONLY AVAILABLE IN BLACK, NAVY AND RED



SIZES [CM]

B&C TRAVELLER+ FU 705
A HALF CHEST
B BODY LENGTH

	XS	S	M	L	XL	2XL	3XL
A	50	53	56	59	62	65	68
B	66	67,5	69	70,5	72	73,5	75



B&C HIGHLANDER+ - FU 704

RAW FLEECE



OUTER WEAR /UNIT

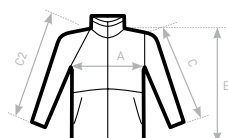
- Tone-on-tone 1/4-zip opening with zip pull pockets in interlock fabric
- 2 side seam pockets
- Open hem with elasticated cord, stopper and easy-to-pull rings



* COLOURS AVAILABLE IN 3XL

- 100% anti-pilling polyester fleece
- 300 g/m²
- XS - S - M - L - XL - 2XL - 3XL*
- 5 pcs/pack & 15 pcs/carton

* ONLY AVAILABLE IN BLACK, NAVY AND RED



C2= RAGLAN

SIZES [CM]

B&C HIGHLANDER+ FU 704

	XS	S	M	L	XL	2XL	3XL
A HALF CHEST	50	53	56	59	62	65	68
B BODY LENGTH	68	69,5	71	72,5	74	75,5	77
C SLEEVE LENGTH	61,5	62,5	63,5	64,5	65,5	66,5	67,5



B&C ID.501 - FU 150

B&C
COLLECTION

B&C
COLLECTION

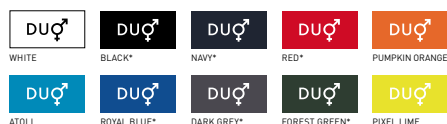
**OUTER
WEAR
/UNIT**



MEDIUM FIT

The micro-fleece Basic by B&C

- Tone-on-tone full zip opening with zip pull
- Necktape
- 2 front pockets with zips and zip pulls
- Essential contemporary look
- Open hem



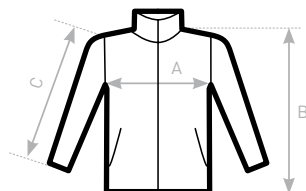
* COLOURS AVAILABLE IN 4XL

- 100% polyester anti-pilling micro-fleece
- 280 g/m²
- XS - S - M - L - XL - 2XL - 3XL - 4XL *
- 5 pcs/pack & 15 pcs/carton

* ONLY AVAILABLE IN BLACK, NAVY, RED, ROYAL BLUE, DARK GREY AND FOREST GREEN



DUO
CONCEPT
with B&C ID.501 /w.



SIZES [CM]

B&C ID.501 FU 150	XS	S	M	L	XL	2XL	3XL	4XL
A HALF CHEST	50	53	56	59	62	65	68	71
B BODY LENGTH	66	67,5	69	70,5	72	73,5	75	76,5
C SLEEVE LENGTH	61	62,5	64	65,5	67	68,5	70	71,5

2
**FAIR
WEAR
FOUNDATION**

FLEECE | UNISEX

B&C ID.501 /WOMEN - FW 151

B&C
COLLECTION

B&C
COLLECTION

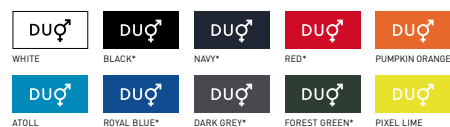
**OUTER
WEAR
/UNIT**



MEDIUM FIT

The micro-fleece Basic by B&C

- Tone-on-tone full zip opening with zip pull
- Necktape
- 2 front pockets with zips and zip pulls
- Essential contemporary look
- Open hem
- Feminine cut



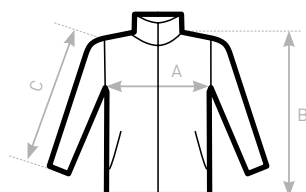
* COLOURS AVAILABLE IN 3XL

- 100% polyester anti-pilling micro-fleece
- 280 g/m²
- XS - S - M - L - XL - 2XL - 3XL*
- 5 pcs/pack & 15 pcs/carton

* ONLY AVAILABLE IN BLACK, NAVY, RED, ROYAL BLUE, DARK GREY AND FOREST GREEN



**DUO♂
CONCEPT**
with B&C ID.501



SIZES [CM]

B&C ID.501 /WOMEN FW 151	XS	S	M	L	XL	2XL	3XL
A HALF CHEST	43,5	46,5	49,5	52,5	55,5	58,5	61,5
B BODY LENGTH AT CB	60	61,5	63	64,5	66	67,5	69
C SLEEVE LENGTH	59	60	61	62	63	64	65

2
**FAIR
WEAR
FOUNDATION**

FLEECE | WOMEN