



**OUTER
WEAR
/UNIT**

1/ SOFTSHELL JACKETS

B&C HOODED SOFTSHELL /MEN
B&C HOODED SOFTSHELL /WOMEN
B&C HOODED SOFTSHELL /KIDS
HIGH PERFORMANCE 3-LAYER
SOFTSHELL JACKET

B&C X-LITE SOFTSHELL /MEN
B&C X-LITE SOFTSHELL /WOMEN
HIGH PERFORMANCE 3-LAYER
SOFTSHELL JACKET - LIGHT PACK
JACKET

B&C ID.701 /MEN
B&C ID.701 /WOMEN
2- LAYER SOFTSHELL JACKET WITH
COMFORTABLE MICRO-FLEECE INNER

3/ MIDDLE WEIGHT JACKETS

B&C MULTI-ACTIVE /MEN
B&C MULTI-ACTIVE /WOMEN
MIDDLE WEIGHT MULTI-USE JACKET
WITH COMFORTABLE FLEECE LINING

B&C CREW BOMBER /MEN
B&C CREW BOMBER /WOMEN
MIDDLE WEIGHT BOMBER JACKET
WITH COMFORTABLE PADDING AND
CONCEALED HOOD

B&C OCEAN SHORE
CONTEMPORARY MIDDLE WEIGHT
JACKET WITH THERMO MICRO-FLEECE
LINING

5/ BODYWARMERS

B&C BODYWARMER EXPLORER
MULTIFUNCTIONAL BODYWARMER

B&C BODYWARMER /MEN
TRENDY «DOWN» BODYWARMER

B&C ZEN+ /WOMEN
TRENDY FEMININE «DOWN»
BODYWARMER

2/ HEAVY WEIGHT JACKETS

/ DOWN JACKETS

B&C SUPERHOOD /MEN
B&C SUPERHOOD /WOMEN
HEAVYWEIGHT PUFFER BOMBER
WITH FASHIONABLE CONTRASTED
INNER LINING

/ PARKAS

B&C CORPORATE 3-IN-1
MODERN MULTI-USE HOODED 3-IN-1
PARKA DESIGNED TO PROTECT IN ALL
WEATHER CONDITIONS

B&C REAL+ /MEN
B&C REAL+ /WOMEN
WARM AND COMFORTABLE
MULTI-ACTIVITY WINTER PARKA

4/ LIGHT WEIGHT JACKETS

/ WITH LINING

B&C TROOPER /MEN
B&C TROOPER /WOMEN
TRENDY LIGHT WEIGHT BOMBER JACKET
WITH ERGONOMIC CONCEALED HOOD

B&C AIR
THE WINDBREAKER WITH LINING

B&C ID.601
B&C ID.601 /WOMEN
MODERN LINED WINDBREAKER

/ WITHOUT LINING

B&C SIROCCO
B&C SIROCCO /WOMEN
B&C SIROCCO /KIDS
THE MARKET REFERENCE
WINDBREAKER

6/ DNM

B&C DNM FRAME /MEN
B&C DNM FRAME /WOMEN
DENIM TRUCKER JACKET

B&C DNM SUPREMACY /MEN
B&C DNM SUPREMACY /WOMEN
DENIM BOMBER JACKET



OUTER WEAR /UNIT

B&C SOFTSHELL JACKETS



**OUTER
WEAR
/UNIT**

B&C HOODED SOFTSHELL /MEN - JM 950

B&C
COLLECTION

SOFTSHELL JACKET



Detachable balaclava hood with adjustable drawstring and trendy stoppers

Full zip opening with chin protector

Set-in sleeves

Full inner placket in shell fabric

Perfect arm & elbow sleeve shape

Easy access for decoration via inner left breast zip

Reverse zips for a trendy look

Flat stitching for greater comfort

Cuffs with closing tabs & embossed plastic pull

Adjustable bottom hem (with drawcord) Longer back

2 front side pockets with zips

High performance Softshell jacket

3-LAYER SOFTSHELL JACKET 340G/M²

Outer layer: 94% polyester - 6% elastane
Woven Softshell

Mid layer: bonded breathable membrane, windproof, waterproof

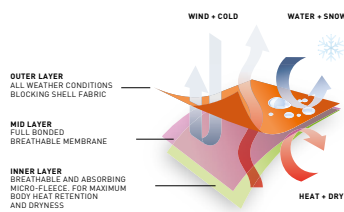
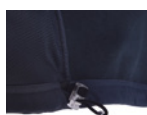
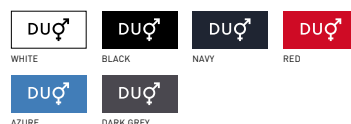
Inner layer: 100% polyester anti-pilling micro-fleece and 100% polyester mesh lining on front panels

Waterproof: 5000 mm

Breathable: 1000 MVP

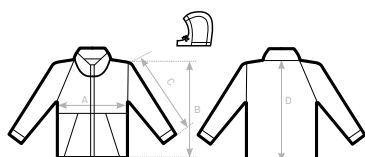
S - M - L - XL - 2XL - 3XL

1 pc/pack & 10 pcs/carton



DUO
CONCEPT

with B&C Hooded Softshell /women



SIZES [CM]

B&C HOODED SOFTSHELL /M. JM 950

	XS	S	M	L	XL	2XL	3XL
A HALF CHEST	-	52	55	58	61	64	67
B BODY LENGTH FROM NECK POINT	-	66,5	69,5	72,5	75,5	78,5	80,5
C SLEEVE LENGTH	-	65	66	67	68	69	70
D CENTER BACK LENGTH	-	69	72	75	78	81	83

B&C
COLLECTION

OUTER
WEAR
/UNIT

JACKET | MEN

B&C HOODED SOFTSHELL /W. - JW 937

SOFTSHELL JACKET



Detachable balaclava hood with adjustable drawstring and trendy stoppers



Full zip opening with chin protector



Full inner placket in shell fabric

Raglan Sleeves

Easy access for decoration via inner left breast zip



Flat stitching for greater comfort

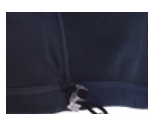
Perfect arm & elbow sleeve shape



Feminine cut



Adjustable bottom hem (with drawcord) Longer back



2 front side pockets with zips



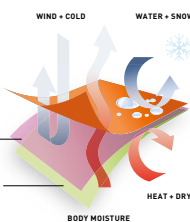
Cuffs with closing tabs & embossed plastic pull



OUTER LAYER
ALL WEATHER CONDITIONS
BLOCKING SHELL FABRIC

MID LAYER
FULL BONDED
BREATHABLE MEMBRANE

INNER LAYER
BREATHABLE AND ABSORBING
MICRO-FLEECE, FOR MAXIMUM
BODY HEAT RETENTION
AND DRYNESS



High performance Softshell jacket

3-LAYER SOFTSHELL JACKET 340G/M²

Outer layer: 94% polyester - 6% elastane
Woven Softshell

Mid layer: bonded breathable membrane, windproof, waterproof

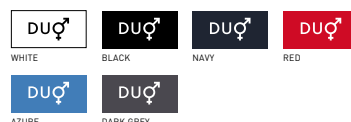
Inner layer: 100% polyester anti-pilling micro-fleece and 100% polyester mesh lining on front panels

Waterproof: 5000 mm

Breathable: 1000 MVP

XS - S - M - L - XL - 2XL

1 pc/pack & 10 pcs/carton

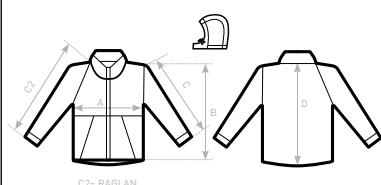


- Windproof
- Waterproof
- Thermo-insulated
- Breathable
- Water-repellent
- Real micro-fleece
- ANTI PILLING Anti-pilling
- 4-way stretch
- Feminine cut



DUO♂
CONCEPT

with B&C Hooded Softshell /men



SIZES [CM]

B&C HOODED SOFTSHELL /W. JW 937

A HALF CHEST
B BODY LENGTH FROM NECK POINT
C SLEEVE LENGTH FROM NECK POINT FOLLOWING THE CURVE
D CENTER BACK LENGTH

	XS	S	M	L	XL	2XL	3XL
A	44	46	48	50	52	54	-
B	59	61	63	65	67	69	-
C	67,5	69,5	71,5	73,5	75,5	77,5	-
D	62	64	66	68	70	72	-

B&C HOODED SOFTSHELL /KIDS - JK 969

SOFTSHELL JACKET



High performance Softshell jacket

3-LAYER SOFTSHELL JACKET 340G/M²

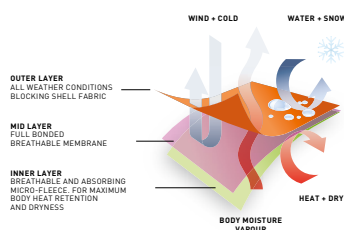
- Outer layer:** 94% polyester - 6% elastane
Woven Softshell
- Mid layer:** bonded breathable membrane, windproof, Waterproof
- Inner layer:** 100% polyester anti-pilling micro-fleece and 100% polyester mesh lining on front panels
- Waterproof:** 5000 mm
- Breathable:** 1000 MVP

5/6 - 7/8 - 9/10 - 11/12 - 13/14

1 pc/pack & 10 pcs/carton

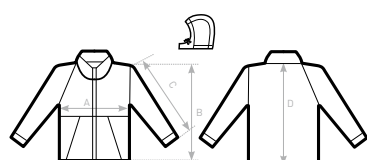


- Windproof
- Waterproof
- Thermo-insulated
- Breathable
- Water-repellent
- Real micro-fleece
- ANTI-PILLING Anti-pilling
- 4-way stretch



DUO
CONCEPT

Trio with B&C Hooded Softshell /men & /women



SIZES [CM]

B&C HOODED SOFTSHELL /K. JK 969

	3/4	5/6	7/8	9/10	11/12	13/14
A HALF CHEST	-	38,5	41	43,5	46	48,5
C SLEEVE LENGTH	-	42	47	52	56	60
D CENTER BACK LENGTH	-	50	54	59	64	69

B&C
COLLECTION
**OUTER
WEAR
/UNIT**

B&C X-LITE SOFTSHELL /MEN - JM 951

SOFTSHELL JACKET



High performance 3-layer Softshell jacket - Light Pack jacket

Outer layer: 94% polyester - 6% elastane
Woven Softshell (300 g/m² - total weight - all layers)

Mid layer: bonded breathable membrane, windproof, waterproof

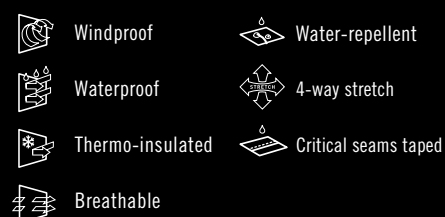
Inner layer: 100% polyester mesh

Waterproof: 5000 mm

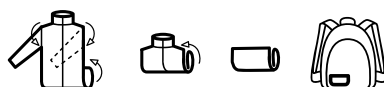
Breathable: 5000 MVP

S - M - L - XL - 2XL - 3XL

1 pc/pack & 10 pcs/carton



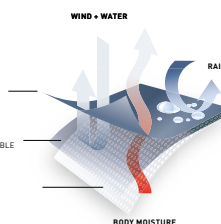
B&C LIGHT PACK CONCEPT:



OUTER LAYER
WOVEN WATER REPELLENT FABRIC (94% PES - 6% ELASTANE)

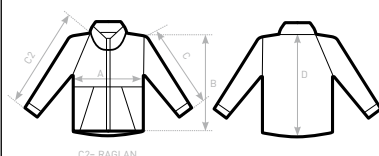
MEMBRANE LAYER
BONDED WATERPROOF, WINDPROOF AND BREATHABLE MEMBRANE

INNER LAYER
100% PES MESH LINING



DUO
CONCEPT

with B&C X-Lite Softshell /women



SIZES [CM]

B&C X-LITE SOFTSHELL /M. JM 951

	XS	S	M	L	XL	2XL	3XL
A HALF CHEST	-	52,8	55,8	58,8	62,8	66,8	70,8
B BODY LENGTH FROM NECK POINT	-	68,5	70	71,5	73	74,5	76
C2 SLEEVE LENGTH FROM NECK POINT	-	79	80,4	81,8	84	86,2	88,4
D CENTER BACK LENGTH	-	65,6	67,2	68,3	70,1	71,4	73,2

B&C
COLLECTION
OUTER WEAR /UNIT

JACKET | MEN

B&C X-LITE SOFTSHELL /WOMEN - JW 938

SOFTSHELL JACKET



Media player compatible: small opening for earphone cord in right chest pocket + hidden earphone loop on the collar

Chin protector

Full front reverse zip fastener with zip pull

Right chest zipped pocket with reverse zip fastening, garage & zip pull

Full inner placket in outer Softshell fabric + 2 inner pockets

Performance fit: ergonomic body shape articulated raglan sleeves

2 front zipped pockets

Adjustable cuffs with rubber tab

Adjustable bottom hem with elasticated drawcords and stoppers

High performance 3-layer Softshell jacket - Light Pack jacket

Outer layer: 94% polyester - 6% elastane
Woven Softshell (300 g/m² - total weight - all layers)

Mid layer: bonded breathable membrane, windproof, waterproof

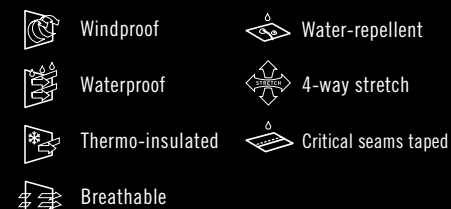
Inner layer: 100% polyester mesh

Waterproof: 5000 mm

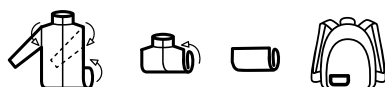
Breathable: 5000 MVP

XS - S - M - L - XL - 2XL

1 pc/pack & 10 pcs/carton



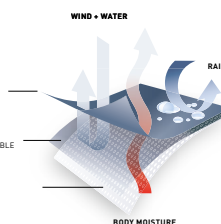
B&C LIGHT PACK CONCEPT:



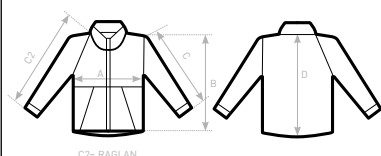
OUTER LAYER
WOVEN WATER REPELLENT FABRIC (94% PES - 6% ELASTANE)

MEMBRANE LAYER
BONDED WATERPROOF, WINDPROOF AND BREATHABLE MEMBRANE

INNER LAYER
100% PES MESH LINING



DUO CONCEPT
with B&C X-Lite Softshell /men



SIZES [CM]

B&C X-LITE SOFTSHELL /W. JW 938

	XS	S	M	L	XL	2XL	3XL
A HALF CHEST	44,5	47,5	50,5	53,5	57,5	61,5	-
B BODY LENGTH FROM NECK POINT	63	64,5	66	67,5	69	70,5	-
C2 SLEEVE LENGTH	72,2	73,7	75,1	76,5	78,7	80,9	-
D CENTER BACK LENGTH	63	64,1	65,2	66,8	68,1	69,9	-

B&C
COLLECTION
OUTER WEAR /UNIT

B&C ID.701 - JU 162

B&C
COLLECTION

SOFTSHELL JACKET



2- layer Softshell jacket with comfortable micro-fleece inner

POLYESTER SOFTSHELL 2-LAYER

Outer layer: 96% polyester - 4% elastane

Woven Softshell 300 g/m²

Inner layer: 100% polyester micro-fleece

S - M - L - XL - 2XL - 3XL

5 pcs/pack & 30 pcs/carton



WHITE WITH WHITE LINING



BLACK WITH BLACK LINING



NAVY WITH NEON GREEN LINING



RED WITH WARM GREY LINING



ATOLL WITH GHOST GREY LINING



DARK GREY WITH NEON ORANGE LINING



Windproof



2-way stretch



Water-repellent



ANTI PILLING Anti-pilling

- 2 zipped hand pockets with zipper "garage"
- Full front tone-on-tone SBS zipper
- Lining: anti-pilling micro-fleece
- 2 inner pockets
- Set-in sleeves
- Full decoration access (front - back - sleeves)
- Fabric tested for the following decoration techniques: screen printing, heat transfer, sublimation (for white only) and embroidery



DUO
CONCEPT

with B&C ID.701 /w.



C2= RAGLAN SLEEVE



SIZES [CM]

B&C ID.701 JU 162

A HALF CHEST
B BODY LENGTH FROM NECK POINT
C SLEEVE LENGTH
D CENTER BACK LENGTH

	XS	S	M	L	XL	2XL	3XL
A	-	53	56	59	62	65	68
B	-	68	69,5	71	72,5	74	75,5
C	-	63,5	65	66,5	68	69,5	71
D	-	71	72,5	74	75,5	77	78,5

B&C
COLLECTION

OUTER
WEAR
/UNIT

JACKET | UNISEX

B&C ID.701 /WOMEN - JW 163

B&C
COLLECTION

SOFTSHELL JACKET



2- layer Softshell jacket with comfortable micro-fleece inner

POLYESTER SOFTSHELL 2-LAYER

Outer layer: 96% polyester - 4% elastane

Woven Softshell 300 g/m²

Inner layer: 100% polyester micro-fleece

XS - S - M - L - XL - 2XL

5 pcs/pack & 10 pcs/carton



WHITE WITH WHITE LINING



BLACK WITH BLACK LINING



NAVY WITH NEON GREEN LINING



RED WITH WARM GREY LINING



ATOLL WITH GHOST GREY LINING



DARK GREY WITH NEON ORANGE LINING



Windproof



2-way stretch



Water-repellent



Feminine cut



Anti-pilling

- 2 zipped hand pockets with zipper "garage"
- Full front tone-on-tone SBS zipper
- Lining: anti-pilling micro-fleece
- 2 inner pockets
- Set-in sleeves
- Full decoration access (front - back - sleeves)
- Fabric tested for the following decoration techniques: screen printing, heat transfer, sublimation (for white only) and embroidery



DUO
CONCEPT

with B&C ID.701 /men



C2= RAGLAN SLEEVE



SIZES [CM]

B&C ID.701 /WOMEN JW 163

A HALF CHEST
B BODY LENGTH FROM NECK POINT
C SLEEVE LENGTH
D CENTER BACK LENGTH

XS	S	M	L	XL	2XL
43	46	49	52	55	58
57	59	61	63	65	67
58	59	60	61	62	63
60	62	64	66	68	70

B&C
COLLECTION

OUTER
WEAR
/UNIT

JACKET | WOMEN



**OUTER
WEAR
/UNIT**

B&C JACKETS | HEAVY WEIGHT JACKETS

B&C SUPERHOOD /MEN - JM 940

B&C
COLLECTION

HEAVY WEIGHT JACKET / DOWN JACKET



Heavyweight puffer bomber with fashionable contrasted inner lining

POLYESTER 300T TAFFETA

Outer layer: 100% polyester 300T taffeta

Inner layer: 100% polyester padded taffeta with feather touch padding

S - M - L - XL - 2XL - 3XL

1 pc/pack & 10 pcs/carton



WHITE WITH WARM GREY LINING



BLACK WITH COBALT BLUE LINING



NAVY WITH NEON GREEN LINING



RED WITH BLACK LINING



ROYAL BLUE WITH NEON ORANGE LINING



DARK GREY WITH NEON ORANGE LINING



Windproof



Thermo-insulated



Showerproof



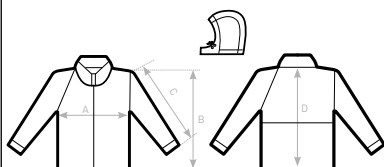
Water-repellent

- Adjustable, removable padded hood
- Left chest and back (shoulder to middle back) panels with hidden zips for easy decoration access
- Standing collar, full length internal stormflap and cotton feel 2x2 rib on cuffs and hem for wind protection
- Bomber style, retail cut for a contemporary image
- 2 zipped hand pockets, 1 inner wallet pocket
- Fabric tested for the following decoration techniques: screen printing, heat transfer, sublimation (for white only) and embroidery



DUO
CONCEPT

with B&C Superhood /w.



B&C SUPERHOOD /WOMEN JW 941

A HALF CHEST
B BODY LENGTH FROM NECK POINT
C SLEEVE LENGTH
D CENTER BACK LENGTH

	XS	S	M	L	XL	2XL	3XL
A	49	52	55	58	61	64	-
B	61	63	65	67	69	71	-
C	65,5	67	68,5	70	71,5	73	-
D	59	61	63	65	67	69	-

B&C
COLLECTION

**OUTER
WEAR
/UNIT**

JACKET | MEN

B&C SUPERHOOD /WOMEN - JW 941

B&C
COLLECTION

HEAVY WEIGHT JACKET / DOWN JACKET



Heavyweight puffer bomber with fashionable contrasted inner lining

POLYESTER 300T TAFFETA

Outer layer: 100% polyester 300T taffeta

Inner layer: 100% polyester padded taffeta with feather touch padding

XS - S - M - L - XL - 2XL

1 pc/pack & 10 pcs/carton



WHITE WITH WARM GREY LINING



BLACK WITH COBALT BLUE LINING



NAVY WITH NEON GREEN LINING



RED WITH BLACK LINING



ROYAL BLUE WITH NEON ORANGE LINING



DARK GREY WITH NEON ORANGE LINING



Windproof



Water-repellent



Showerproof



Feminine cut



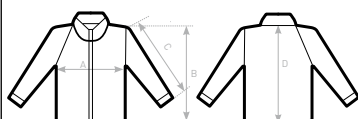
Thermo-insulated

- Adjustable, removable padded hood
- Left chest and back (shoulder to middle back) panels with hidden zips for easy decoration access
- Standing collar, full length internal stormflap and cotton feel 2x2 rib on cuffs and hem for wind protection
- Bomber style, retail cut for a contemporary image
- 2 zipped hand pockets
- Fabric tested for the following decoration techniques: screen printing, heat transfer, sublimation (for white only) and embroidery



DUO
CONCEPT

with B&C Superhood /m.



SIZES [CM]

B&C SUPERHOOD /WOMEN JW 941

A HALF CHEST
B BODY LENGTH FROM NECK POINT
C SLEEVE LENGTH
D CENTER BACK LENGTH

	XS	S	M	L	XL	2XL	3XL
A	49	52	55	58	61	64	-
B	61	63	65	67	69	71	-
C	65,5	67	68,5	70	71,5	73	-
D	59	61	63	65	67	69	-

B&C
COLLECTION

**OUTER
WEAR
/UNIT**

JACKET | WOMEN

B&C CORPORATE 3-IN-1 - JU 873

B&C
COLLECTION

HEAVY WEIGHT JACKET / PARKA



Modern multi-use hooded 3-in-1 parka designed to protect in all weather conditions

POLYESTER PONGEE

Outer jacket:

Out: 100% polyester pongee

In: Body lining: 100% polyester mesh

Sleeve lining: 100% polyester 190T taffeta

Inner jacket: 100% polyester anti-pilling micro-fleece

XS - S - M - L - XL - 2XL - 3XL

1 pc/pack & 10 pcs/carton



Windproof



Thermo-insulated



Waterproof



ANTI-PILLING
Anti-pilling
micro-fleece

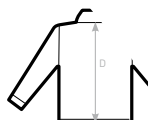


Water-repellent



Critical seams taped

- Ultra protective hood concealed in the collar, ergonomically designed
- Adjustable bottom hem with drawstring and ergonomic sleeve design with adaptable cuffs provide a comfortable fit
- Zip-in fleece with 5 point change system
- 2 zipped hand pockets with overlap, zipped chest pocket
- Zip at lower back gives easy and full decoration access (front - back - sleeves)
- Fabric tested for the following decoration techniques: screen printing, heat transfer, and embroidery



SIZES [CM]

B&C CORPORATE 3-IN-1 JU 873

A HALF CHEST
B BODY LENGTH FROM NECK POINT
C SLEEVE LENGTH
D CENTER BACK LENGTH

XS	S	M	L	XL	2XL	3XL
55	58	61	64	67	70	73
81	82,5	84	85,5	87	88,5	90
65,5	67	68,5	70	71,5	73	74,5
78,5	80	81,5	83	84,5	86	87,5

B&C
COLLECTION

OUTER
WEAR
/UNIT

JACKET | UNISEX

B&C REAL+ /MEN - JM 970

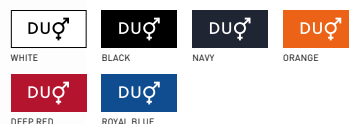
B&C
COLLECTION

HEAVY WEIGHT JACKET / PARKA



Warm & comfortable multi-activity winter parka

- OUT: 100% Oxford polyester | Waterproof 1000 MM
- IN: 100% polyester taffeta quilt padding
- 100% polyester anti-pilling micro-fleece on top back panel and collar
- S - M - L - XL - 2XL - 3XL
- 1 pc/pack & 10 pcs/carton



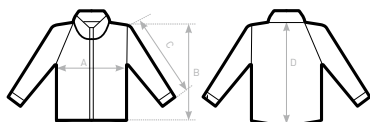
- Windproof
- Thermo-insulated
- Waterproof
- ANTI PILLING Antipilling micro-fleece
- Water-repellent
- Critical seams taped

- Concealed 3 panelled hood with eyelets and flat drawstring with plastic ends
- Full front zip fastener with stormflap
- Ergonomic sleeves & articulated elbow for ease of movement
- 2 front zipped pockets
- 1 inner zipped wallet pocket
- Adjustable cuffs



DUO
CONCEPT

with B&C Real+ /women



SIZES [CM]

B&C REAL+ /MEN JM 970

	XS	S	M	L	XL	2XL	3XL
A HALF CHEST	-	59,6	62,6	65,6	69,6	73,6	77,6
B BODY LENGTH FROM NECK POINT	-	83	84	85	87	89	91
C SLEEVE LENGTH	-	65,8	66,7	67,7	69,2	70,8	72,4
D CENTER BACK LENGTH	-	79,8	80,9	82	83,8	85,6	87,4

B&C
COLLECTION
**OUTER
WEAR
/UNIT**

JACKET | MEN

B&C REAL+ /WOMEN - JW 925

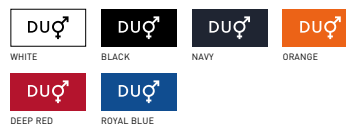
B&C
COLLECTION

HEAVY WEIGHT JACKET / PARKA



Warm & comfortable multi-activity winter parka

- OUT: 100% Oxford polyester | Waterproof 1000 MM
- IN: 100% polyester taffeta quilt padding
- 100% polyester anti-pilling micro-fleece (180 g/m²) on top back panel and collar
- XS - S - M - L - XL - 2XL
- 1 pc/pack & 10 pcs/carton



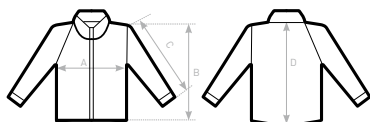
- Windproof
- Thermo-insulated
- Waterproof
- ANTI PILLING Anti-pilling micro-fleece
- Water-repellent
- Critical seams taped
- Feminine cut

- Concealed 3 panelled hood with eyelets and flat drawstring with plastic ends
- Full front zip fastener with stormflap
- Ergonomic sleeves & articulated elbow for ease of movement
- 2 front zipped pockets
- 1 inner zipped wallet pocket
- Adjustable cuffs



DUO
CONCEPT

with B&C Real+ /men



SIZES [CM]

B&C REAL+ /WOMEN JW 925

	XS	S	M	L	XL	2XL	3XL
A HALF CHEST	52,9	55,9	58,9	61,9	65,9	69,9	-
B BODY LENGTH FROM NECK POINT	73,5	75	76	77	79	81	-
C SLEEVE LENGTH	61,8	62,7	63,7	64,6	66,2	67,8	-
D CENTER BACK LENGTH	71,0	72,1	73,2	74,3	76,1	77,9	-

B&C
COLLECTION
**OUTER
WEAR
/UNIT**

JACKET | WOMEN



**OUTER
WEAR
/UNIT**

B&C JACKETS | MIDDLE WEIGHT JACKETS

B&C MULTI-ACTIVE /MEN - JM 825

B&C
COLLECTION

MIDDLE WEIGHT JACKET



**Middle weight multi-use jacket
with comfortable fleece lining**

POLYESTER 210T TAFFETA

Outer layer: 100% polyester 210T taffeta

Body lining: 100% polyester anti-pilling
micro-fleece

Sleeve lining: 100% polyester quilted taffeta

S - M - L - XL - 2XL - 3XL

5 pcs/pack & 30 pcs/carton



WHITE WITH
WHITE LINING



BLACK WITH
WARM GREY LINING



NAVY WITH
WARM GREY LINING



RED WITH
WARM GREY LINING



ATOLL WITH
WARM GREY LINING



DARK GREY WITH
WARM GREY LINING



Showerproof

ANTI
PILLING

Anti-pilling
micro-fleece



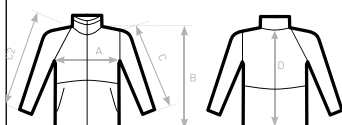
Windproof

- Concealed hood
- Contrasted micro-fleece lining for extra warmth
- Standing collar, adjustable hem and cuffs for great protection
- PU Coating for better water protection and breathability
- Forward seam on shoulder for better comfort and waterproofness
- 2 zipped hand pockets with overlap
- 1 inner wallet pocket with closing tab
- Zip at lower back gives easy full decoration access (front - back - sleeves)
- Maximised decoration areas
- Fabric tested for the following decoration techniques: screen printing, heat transfer, sublimation (for white only) and embroidery



**DUO
CONCEPT**

with B&C Multi-Active /w.



C2= RAGLAN

SIZES [CM]

B&C MULTI-ACTIVE /MEN JM 825

A HALF CHEST
B BODY LENGTH FROM NECK POINT
C SLEEVE LENGTH
D CENTER BACK LENGTH

	XS	S	M	L	XL	2XL	3XL
A	-	55	58	61	64	67	70
B	-	72,5	74,5	76,5	78,5	80,5	82,5
C	-	62,5	64	65,5	67	68,5	70
D	-	71	73	75	77	79	81

B&C
COLLECTION

**OUTER
WEAR
/UNIT**

JACKET | MEN

B&C MULTI-ACTIVE /WOMEN - JW 826

B&C
COLLECTION

MIDDLE WEIGHT JACKET




Middle weight multi-use jacket with comfortable fleece lining


POLYESTER 210T TAFFETA

Outer layer: 100% polyester 210T taffeta

Body lining: 100% polyester anti-pilling micro-fleece

Sleeve lining: 100% polyester quilted taffeta

 XS - S - M - L - XL - 2XL

 5 pcs/pack & 10 pcs/carton



WHITE WITH
WHITE LINING



BLACK WITH
WARM GREY LINING



NAVY WITH
WARM GREY LINING



RED WITH
WARM GREY LINING



ATOLL WITH
WARM GREY LINING



DARK GREY WITH
WARM GREY LINING



Showerproof



Feminine cut



Windproof



ANTI
PILLING

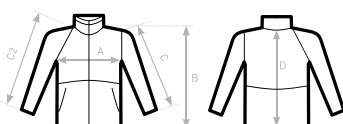
Anti-pilling
micro-fleece

- Concealed hood
- Contrasted micro-fleece lining for extra warmth
- Standing collar, adjustable hem and cuffs for great protection
- PU Coating for better water protection and breathability
- Forward seam on shoulder for better comfort and waterproofness
- 2 zipped hand pockets with overlap
- Zip at lower back gives easy full decoration access (front - back - sleeves)
- Maximised decoration areas
- Fabric tested for the following decoration techniques: screen printing, heat transfer, sublimation (for white only) and embroidery



DUO
CONCEPT

with B&C Multi-Active /m.



C2= RAGLAN

SIZES [CM]

B&C MULTI-ACTIVE /WOMEN JW 826

A HALF CHEST
B BODY LENGTH FROM NECK POINT
C SLEEVE LENGTH
D CENTER BACK LENGTH

XS	S	M	L	XL	2XL
49	52	55	58	61	64
69	71	73	75	77	79
61	62	63	64	65	66
67	69	71	73	75	77

B&C
COLLECTION

**OUTER
WEAR
/UNIT**

JACKET | WOMEN

B&C CREW BOMBER /MEN - JM 961

MIDDLE WEIGHT JACKET



Middle weight bomber jacket with comfortable padding and concealed hood

POLYESTER PONGEE

Outer layer: 100% polyester pongee

Inner layer: 100% polyester quilted taffeta

S - M - L - XL - 2XL - 3XL

1 pc/pack & 15 pcs/carton



Waterproof



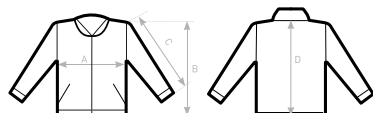
Windproof

- Contemporary cotton feel heavy rib on cuffs and bottom hem
- Standing collar and full length internal stormflap ensure wind protection
- Forward shoulder seams for better comfort and water protection
- Tone-on-tone, high quality SBS zippers
- 2 zipped hand pockets with overlap
- 1 inner wallet pocket with closing tabs
- Easy access for decoration thanks to the zip opening at the bottom of the lining
- Fabric tested for the following decoration techniques - screen printing, heat transfer, and embroidery.



**DUO
CONCEPT**

with B&C Crew Bomber /women



SIZES [CM]

B&C CREW BOMBER /MEN JM 961

	XS	S	M	L	XL	2XL	3XL
A HALF CHEST	-	56	59	62	65	68	71
B BODY LENGTH FROM NECK POINT	-	68	70	72	74	76	78
C SLEEVE LENGTH	-	66	67,5	69	70,5	72	73,5
D CENTER BACK LENGTH	-	66,5	68,5	70,5	72,5	74,5	76,5



**OUTER
WEAR
/UNIT**

B&C CREW BOMBER /WOMEN - JW 962

MIDDLE WEIGHT JACKET



Middle weight bomber jacket with comfortable padding and concealed hood

POLYESTER PONGEE

Outer layer: 100% polyester pongee

Inner layer: 100% polyester quilted taffeta

XS - S - M - L - XL - 2XL

1 pc/pack & 10 pcs/carton

DUO
BLACK WITH
WARM GREY LINING

DUO
NAVY WITH
WARM GREY LINING

DUO
RED WITH
WARM GREY LINING

DUO
DARK GREY WITH
WARM GREY LINING



Waterproof



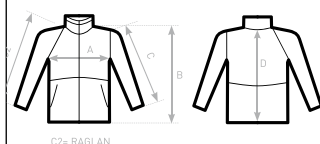
Windproof

- Contemporary cotton feel heavy rib on cuffs and bottom hem
- Standing collar and full length internal stormflap ensure wind protection
- Forward shoulder seams for better comfort and water protection
- Tone-on-tone, high quality SBS zippers
- 2 zipped hand pockets with overlap
- 1 inner wallet pocket with closing tabs
- Easy access for decoration thanks to the zip opening at the bottom of the lining
- Fabric tested for the following decoration techniques - screen printing, heat transfer, and embroidery



DUO
CONCEPT

with B&C Crew Bomber /men



C2= RAGLAN

SIZES [CM]

B&C CREW BOMBER /WOMEN JW 962

	XS	S	M	L	XL	2XL
A HALF CHEST	48	51	54	57	60	63
B BODY LENGTH FROM NECK POINT	60	62	64	66	68	70
C SLEEVE LENGTH	62	63,5	65	66,5	68	69,5
D CENTER BACK LENGTH	58	60	62	64	66	68

B&C
COLLECTION

**OUTER
WEAR
/UNIT**

B&C OCEAN SHORE - JU 824

B&C
COLLECTION

MIDDLE WEIGHT JACKET



Contemporary middle weight jacket with thermo micro-fleece lining

- OUT:** 100% nylon taffeta
- IN:** Body lining: 100% polyester micro-fleece
Sleeve lining: 100% padded polyester
- S - M - L - XL - 2XL - 3XL*
- 5 pcs/pack & 30 pcs/carton

* ONLY AVAILABLE IN BLACK, NAVY AND RED



* COLOURS AVAILABLE IN 3XL

- Windproof
- Water-repellent
- Showerproof
- Real micro-fleece
- Thermo-insulated

- Adjustable storm hood concealed in collar
- Micro-fleece lining for extra warmth
- Standing collar for great protection
- Front covered full zip opening with closing tabs and zip pull
- Adjustable cuffs with closing tabs
- Open hem with elasticated cord, 2 stoppers and easy-to-pull rings
- 2 front pockets and 1 inner wallet pocket



C2= RAGLAN

SIZES [CM]

B&C OCEAN SHORE JU 824

- A HALF CHEST
- B BODY LENGTH FROM NECK POINT
- C SLEEVE LENGTH
- D CENTER BACK LENGTH

	XS	S	M	L	XL	2XL	3XL
A	-	60	62,5	65	67,5	70	72,5
B	-	74	76	78	80	82	84
C	-	61,5	63	64,5	66	67,5	69
D	-	72	74	76	78	80	82

B&C
COLLECTION

OUTER
WEAR
/UNIT

JACKET | UNISEX



**OUTER
WEAR
/UNIT**

B&C JACKETS | LIGHT WEIGHT JACKETS

B&C TROOPER /MEN - JM 963

B&C
COLLECTION

LIGHT WEIGHT JACKET / WITH LINING




Trendy light weight bomber jacket with ergonomic concealed hood


POLYESTER 210T TAFFETA

Outer layer: 100% polyester 210T taffeta

Body lining: 100% polyester mesh

Sleeve lining: 100% polyester taffeta

 S - M - L - XL - 2XL - 3XL

 5 pcs/pack & 30 pcs/carton



WHITE WITH
WHITE LINING



BLACK WITH
COBALT BLUE LINING



NAVY WITH
NEON GREEN LINING



RED WITH
WARM GREY LINING



ROYAL BLUE WITH
NEON ORANGE LINING



REAL GREEN WITH
NEON ORANGE LINING



Showerproof

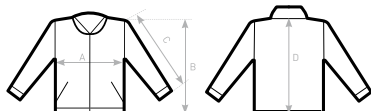


Windproof

- Fashionable contrasted diamond mesh lining, improves breathability and comfort
- Self fabric inner collar
- Contemporary cotton feel heavy rib on cuffs and bottom hem
- Forward shoulder seams for better comfort and water protection
- 2 zipped hand pockets
- 1 inner wallet pocket with closing tabs
- Zip at lower back gives easy full decoration access (front - back - sleeves)
- Fabric tested for the following decoration techniques - screen printing, heat transfer, sublimation (for white only), and embroidery



**DUO
CONCEPT**
with B&C Trooper /w.



SIZES [CM]

B&C TROOPER /MEN JM 963

A HALF CHEST
B BODY LENGTH FROM NECK POINT
C SLEEVE LENGTH
D CENTER BACK LENGTH

	XS	S	M	L	XL	2XL	3XL
A	-	56	59	62	65	68	71
B	-	68	70	72	74	76	78
C	-	66,5	68	69,5	71	72,5	74
D	-	66,5	68,5	70,5	72,5	74,5	76,5

B&C
COLLECTION

**OUTER
WEAR
/UNIT**

JACKET | MEN

B&C TROOPER /WOMEN - JW 964

B&C
COLLECTION

LIGHT WEIGHT JACKET / WITH LINING



Trendy light weight bomber jacket with ergonomic concealed hood


POLYESTER 210T TAFFETA

Outer layer: 100% polyester 210T taffeta

Body lining: 100% polyester mesh

Sleeve lining: 100% polyester taffeta

 XS - S - M - L - XL - 2XL

 5 pcs/pack & 10 pcs/carton



WHITE WITH
WHITE LINING



BLACK WITH
COBALT BLUE LINING



NAVY WITH
NEON GREEN LINING



RED WITH
WARM GREY LINING



ROYAL BLUE WITH
NEON ORANGE LINING



Showerproof



Feminine cut



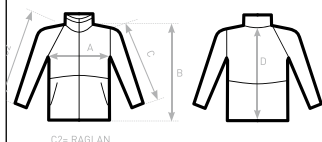
Windproof

- Fashionable contrasted diamond mesh lining, improves breathability and comfort
- Self fabric inner collar
- Contemporary cotton feel heavy rib on cuffs and bottom hem
- Forward shoulder seams for better comfort and water protection
- 2 zipped hand pockets
- 1 inner wallet pocket with closing tabs
- Zip at lower back gives easy full decoration access (front - back - sleeves)
- Fabric tested for the following decoration techniques - screen printing, heat transfer, sublimation (for white only), and embroidery



**DUO
CONCEPT**

with B&C Trooper /men



C2= RAGLAN

SIZES [CM]

B&C TROOPER /WOMEN JW 964

A HALF CHEST
B BODY LENGTH FROM NECK POINT
C SLEEVE LENGTH
D CENTER BACK LENGTH

XS	S	M	L	XL	2XL	3XL
48	51	54	57	60	63	-
60	62	64	66	68	70	-
62	63,5	65	66,5	68	69,5	-
58,5	60,5	62,5	64,5	66,5	68,5	-

B&C
COLLECTION

**OUTER
WEAR
/UNIT**

JACKET | WOMEN

B&C AIR - JU 801

B&C
COLLECTION

LIGHT WEIGHT JACKET / WITH LINING



The windbreaker with lining

- OUT:** 100% nylon taffeta
- IN:** Body lining: 100% polyester mesh
Sleeve lining: 100% polyester taffeta
- S - M - L - XL - 2XL - 3XL*
- 5 pcs/pack & 30 pcs/carton

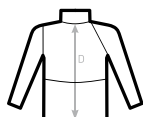
* ONLY AVAILABLE IN BLACK, NAVY AND RED



* COLOURS AVAILABLE IN 3XL

- Windproof
- Showerproof
- Water-repellent

- Adjustable storm hood concealed in collar
- Standing collar for great protection
- Front zip opening with zip pull
- Elasticated cuffs
- Adjustable bottom hem with drawcord
- 2 front pockets with zips
- Fold-away jacket (K-Way® system) in right pocket with double slider zip



C2= RAGLAN

SIZES [CM]

B&C AIR JU 801	XS	S	M	L	XL	2XL	3XL
A HALF CHEST	-	59	64	69	74	79	84
B BODY LENGTH FROM NECK POINT	-	72	75	78	81	84	87
C SLEEVE LENGTH	-	55,5	57	58,5	60	61,5	63
D CENTER BACK LENGTH	-	71	74	77	80	83	86

B&C
COLLECTION
**OUTER
WEAR
/UNIT**

JACKET | UNISEX

B&C ID.601 > JU 160

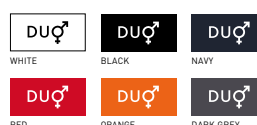
B&C
COLLECTION

LIGHT WEIGHT JACKET / WITH LINING



Modern lined windbreaker

- 100% 210T polyester taffeta with acrylic coating (AC)
- Body lining: 100% polyester tricot
- Sleeves lining: 100% polyester taffeta
- S - M - L - XL - 2XL - 3XL
- 5 pcs/pack & 30 pcs/carton



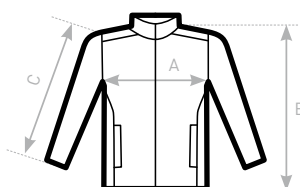
- Windproof
- Water-repellent
- Showerproof
- Thermoinsulated

- Ergonomic hood concealed in collar with closing tabs
- Self fabric lining inside the collar
- Forward seams on shoulders for better protection
- Front zip opening with zip pull
- Adjustable bottom hem with drawcord
- 2 front pockets with overlap and 1 inner wallet pocket



DUO
CONCEPT

with B&C ID.601 /w.



SIZES [CM]

B&C ID. 601 JU 160	XS	S	M	L	XL	2XL	3XL
A HALF CHEST	-	54	57	60	63	66	69
B BODY LENGTH AT CB	-	70	72	74	76	78	80
C SLEEVE LENGTH	-	63,5	65	66,5	68	69,5	71

B&C
COLLECTION
**OUTER
WEAR
/UNIT**

JACKET | UNISEX

B&C ID.601 /WOMEN > JW 161

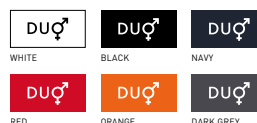
B&C
COLLECTION

LIGHT WEIGHT JACKET / WITH LINING



Modern lined windbreaker

- 100% 210T polyester taffeta with acrylic coating (AC)
- Body lining:** 100% polyester tricot
Sleeves lining: 100% polyester taffeta
- XS - S - M - L - XL - 2XL
- 5 pcs/pack & 30 pcs/carton



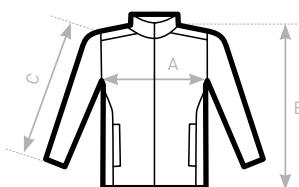
- Windproof
- Thermo-insulated
- Showerproof
- Feminine cut
- Water-repellent

- Ergonomic hood concealed in collar with closing tabs
- Self fabric lining inside the collar
- Forward seams on shoulders for better protection
- Front zip opening with zip pull
- Adjustable bottom hem with drawcord
- 2 front pockets with overlap



DUO
CONCEPT

with B&C ID.601



SIZES [CM]

B&C ID. 601 /WOMEN JW 161	XS	S	M	L	XL	2XL
A HALF CHEST	46	49	52	55	58	61
B BODY LENGTH AT CB	63	65	67	69	71	73
C SLEEVE LENGTH	65	66,5	67,5	69	70	71,5

B&C
COLLECTION
**OUTER
WEAR
/UNIT**

B&C SIROCCO - JU 800

B&C
COLLECTION

LIGHT WEIGHT JACKET / WITHOUT LINING



The Market Reference Windbreaker

- 100% nylon taffeta
- S - M - L - XL - 2XL - 3XL*
- 10 pcs/pack & 50 pcs/carton

* ONLY AVAILABLE IN WHITE, BLACK, NAVY, RED, ROYAL BLUE AND BOTTLE GREEN



* COLOURS AVAILABLE IN 3XL

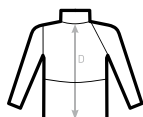
- Windproof
- Water-repellent
- Showerproof

- Full zip opening with zip pull
- Adjustable storm hood concealed inside the collar
- 1 front pocket
- Fold-away jacket (K-way® system) in pocket with double slider zip
- Adjustable bottom hem with drawcord



**DUO
CONCEPT**

with B&C Sirocco /women
EXISTS IN B&C SIROCCO /KIDS



SIZES [CM]

B&C SIROCCO JU 800

- A HALF CHEST
- B BODY LENGTH FROM NECK POINT
- C SLEEVE LENGTH
- D CENTER BACK LENGTH

	XS	S	M	L	XL	2XL	3XL
A	59	64	69	74	79	84	89
B	72	75	78	81	84	87	90
C	55,5	57	58,5	60	61,5	63	65
D	71	74	77	80	83	86	89

B&C
COLLECTION
**OUTER
WEAR
/UNIT**

JACKET | UNISEX

B&C SIROCCO /WOMEN - JW 902

B&C
COLLECTION

LIGHT WEIGHT JACKET / WITHOUT LINING



The Market Reference Windbreaker

- 100% nylon taffeta
- XS - S - M - L - XL - 2XL
- 10 pcs/pack & 30 pcs/carton



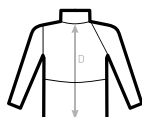
- Windproof
- Water-repellent
- Showerproof
- Feminine cut

- Full zip opening with zip pull
- Adjustable storm hood concealed inside the collar
- 2 front pockets
- Fold-away jacket (K-way® system) in pocket with double slider zip
- Adjustable bottom hem with drawcord



**DUO
CONCEPT**

with B&C Sirocco
EXISTS IN B&C SIROCCO /KIDS



SIZES [CM]

B&C SIROCCO /WOMEN JW 902

	XS	S	M	L	XL	2XL	3XL
A HALF CHEST	50	52	54	56	58	60	-
B BODY LENGTH FROM NECK POINT	70	72	74	76	78	80	-
C SLEEVE LENGTH	61	63	65	67	69	71	-
D CENTER BACK LENGTH	69	71	73	75	77	79	-

B&C
COLLECTION

**OUTER
WEAR
/UNIT**

JACKET | WOMEN

B&C SIROCCO /KIDS - JK 950

B&C
COLLECTION

LIGHT WEIGHT JACKET / WITHOUT LINING



The Market Reference Windbreaker

- 100% nylon taffeta
- 3/4 - 5/6 - 7/8 - 9/11 - 12/14
- 10 pcs/pack & 50 pcs/carton



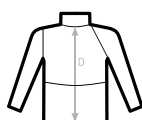
- Windproof
- Showerproof
- Water-repellent

- Full zip opening with zip pull
- Adjustable storm hood concealed inside the collar
- Fold-away jacket (K-way® system) in pocket with double slider zip
- Adjustable bottom hem with drawcord



DUO
CONCEPT

B&C Sirocco &
B&C Sirocco /women



SIZES [CM]

B&C SIROCCO /KIDS JK 950	1/2	3/4	5/6	7/8	9/11	12/14
		98/104	110/116	122/128	134/146	152/164
A HALF CHEST	-	41	44	47	51	55
B BODY LENGTH FROM NECK POINT	-	48	52	56	61	66
C SLEEVE LENGTH	-	38	41	44	47	50
D CENTER BACK LENGTH	-	48	52	56	61	66

B&C
COLLECTION
**OUTER
WEAR
/UNIT**



**OUTER
WEAR
/UNIT**

B&C JACKETS | BODYWARMERS

B&C BODYWARMER EXPLORER - JU 880

B&C
COLLECTION


BODYWARMER




Multifunctional bodywarmer

OUT: 65% polyester / 35% cotton
water-repellent & water-resistant

IN: 100% heavy padded polyester lining
for extra warmth (285 g/m²)

 S - M - L - XL - 2XL - 3XL*

 1 pc/pack & 10 pcs/carton

*ONLY FOR BLACK, NAVY AND RED



* COLOURS AVAILABLE IN 3XL



Windproof



Thermo-insulated

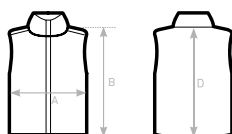


Showerproof



Water-repellent

- Adjustable wind-stoppers in armholes with elasticated cord and stoppers
- Front covered full zip with press stud fastening
- 5 outer pockets, including 2 with zips
- 2 extra outer pencil pockets
- 1 inner wallet pocket
- Open hem and longer back



SIZES [CM]

B&C BODYWARMER EXPLORER JU 880

A HALF CHEST
B BODY LENGTH FROM NECK POINT
D CENTER BACK LENGTH

	XS	S	M	L	XL	2XL	3XL
A	-	60,5	62,5	64,5	66,5	68,5	70,5
B	-	66	68	70	72	74	76
D	-	71,5	73,5	75,5	77,5	79,5	81,5

B&C
COLLECTION

**OUTER
WEAR
/UNIT**

JACKET | UNISEX

B&C BODYWARMER /MEN - JM 930

B&C
COLLECTION

BODYWARMER




Trendy "down" bodywarmer

OUT: 100% nylon taffeta

IN: 100% padded taffeta polyester lining
with feather touch

 S - M - L - XL - 2XL - 3XL*

 5 pcs/pack & 10 pcs/carton

* ONLY AVAILABLE IN BLACK, NAVY AND RED



* COLOURS AVAILABLE IN 3XL

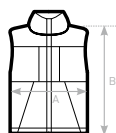


- 2 front pockets
- Padded hood with feather touch, removable with zip



DUO
CONCEPT

with B&C Zen+
/women



SIZES [CM]

B&C BODYWARMER /MEN JM 930

A HALF CHEST
B BODY LENGTH FROM NECK POINT
D CENTER BACK LENGTH

	XS	S	M	L	XL	2XL	3XL
A	-	58	60	62	65	67	69
B	-	67	69	71	73	77	79
D	-	71	73	75	77	81	83

B&C
COLLECTION

**OUTER
WEAR
/UNIT**

JACKET | MEN

B&C ZEN+ /WOMEN - JW 935


BODYWARMER




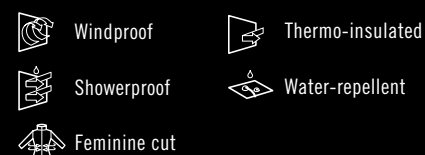
Trendy "down" feminine bodywarmer

OUT: 100% nylon taffeta

IN: 100% padded taffeta polyester lining with feather touch

 XS - S - M - L - XL - 2XL

 1 pc/pack & 10 pcs/carton

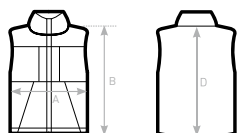


- 2 front pockets
- Adjustable bottom hem (with drawcord and stoppers)



**DUO♂
CONCEPT**

with B&C
Bodywarmer /men



SIZES [CM]

B&C ZEN+ /WOMEN JW 935

A HALF CHEST
B BODY LENGTH FROM NECK POINT
RELAXED / WHEN WORN
D CENTER BACK LENGTH
RELAXED / WHEN WORN

	XS	S	M	L	XL	2XL	3XL
A	52,5	55	57,5	60	62,5	65	-
B	59	60	61,5	62,5	63,5	64,5	-
D	55	56	57	58	59	60	-

B&C
COLLECTION
**OUTER
WEAR
/UNIT**



**OUTER
WEAR
/UNIT**

B&C JACKETS | DNM

B&C DNM FRAME /MEN - JM D10



**OUTER
WEAR
/UNIT**

MEDIUM FIT

DENIM trucker jacket

- 100% DENIM cotton, garment wash
- Metallic buttons in antique brass
- Front folding with bartacks to reinforce DNM RAW look
- Two side pockets and one chest pocket with visible finish in reverse denim and bartack to simulate pen pocket
- Single button cuffs
- Specific elbow construction
- Decorative button on waistband at the back
- Contrast stitching



- Denim Twill, 100% cotton
- Garment wash
- Heavyweight denim (12 OZ)
- S - M - L - XL - 2XL - 3XL
- 1 pc/pack & 20 pcs/carton

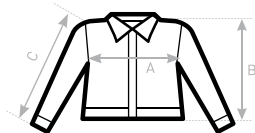


TIPS & IDEAS

- No lining - easy access for decoration



**DUO♂
CONCEPT**
with B&C DNM Frame
/women



SIZES [CM]

B&C DNM FRAME /M. JM D10	XS	S	M	L	XL	2XL	3XL
A HALF CHEST	-	50	53	56	59	62	65
B CENTER BACK LENGTH	-	63	65	67	69	71	73
C SLEEVE LENGTH	-	65,5	67	68,5	70	71,5	73



B&C DNM FRAME /WOMEN - JW D11



**OUTER
WEAR
/UNIT**

FITTED

DENIM trucker jacket

- 100% DENIM cotton, garment wash
- Metallic buttons in antique brass
- Front folding with bartacks to reinforce DNM RAW look
- One front ticket pocket with flap & button with decorative reinforcement stitch
- Single button cuffs
- Two small foldings on back for a feminine look
- Decorative button on waistband at the back
- Contrast stitching



- Denim Twill, 100% cotton
- Garment wash
- Heavyweight denim (12 OZ)
- XS - S - M - L - XL - 2XL
- 1 pc/pack & 20 pcs/carton



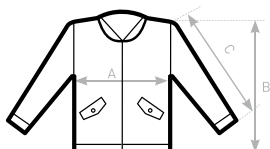
TIPS & IDEAS

- No lining - easy access for decoration



DUO
CONCEPT

with B&C DNM Frame /men



SIZES [CM]

B&C DNM FRAME /W. JW D11	XS	S	M	L	XL	2XL	3XL
A HALF CHEST	47	50	53	56	59	62	-
B CENTER BACK LENGTH	50	51,5	53	54,5	56	57,5	-
C SLEEVE LENGTH	60	61,5	63	64,5	66	67,5	-



B&C DNM SUPREMACY /M. - JM D14



**OUTER
WEAR
/UNIT**

TIPS & IDEAS

- Zip cursor is made to support a promotional pull
- Denim fabric patch inside the jacket, top center back position to support a print

MEDIUM FIT

DENIM bomber jacket

- Outside 100% DENIM cotton, garment wash
- Two front pockets with press-stud
- Inner patch pocket
- Front full zip in antique brass, heavy size
- Soft cotton 2x2 rib with elastane at the neck, cuffs and waist
- Lining for a qualitative finish (even when embroidered)
- Inner zip for easy access for decoration



OUT: Denim Twill, 100% cotton

IN: Lining front and back: 65% polyester, 35% cotton

Lining sleeves: 100% taffeta polyester



OUT: Garment wash



Heavyweight denim (12 OZ)



S - M - L - XL - 2XL - 3XL

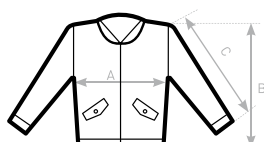


1 pc/pack & 20 pcs/carton



**DUO♂
CONCEPT**

with B&C DNM Supremacy
/women



SIZES [CM]

B&C DNM SUPREMACY /M. JM D14	XS	S	M	L	XL	2XL	3XL
A HALF CHEST	-	52	55	58	61	64	67
B CENTER BACK LENGTH	-	66	68	70	72	74	76
C SLEEVE LENGTH	-	65	66,5	68	69,5	71	72,5



B&C DNM SUPREMACY /W. - JW D15



**OUTER
WEAR
/UNIT**

TIPS & IDEAS

- Zip cursor is made to support a promotional pull
- Denim fabric patch inside the jacket, top center back position to support a print

FITTED

DENIM bomber jacket

- Outside 100% DENIM cotton, garment wash
- Two front pockets with press-stud
- Front full zip in antique brass, heavy size
- Soft cotton 2x2 rib with elastane at the neck, cuffs and waist
- Lining for a qualitative finish (even when embroidered)
- Inner zip for easy access for decoration



OUT: Denim Twill, 100% cotton

IN: Lining front and back: 65% polyester, 35% cotton

Lining sleeves: 100% taffeta polyester



OUT: Garment wash



Heavyweight denim (12 OZ)



XS - S - M - L - XL - 2XL



1 pc/pack & 20 pcs/carton

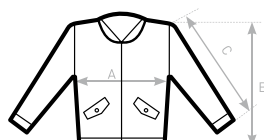


40



**DUO
CONCEPT**

with B&C DNM Supremacy /men



SIZES [CM]

B&C DNM SUPREMACY /W. JW D15	XS	S	M	L	XL	2XL	3XL
A HALF CHEST	48	51	54	57	60	63	-
B CENTER BACK LENGTH	55	57	59	61	63	66	-
C SLEEVE LENGTH	64	65,5	67	68,5	70	71,5	-

